



Nearly all money to fund the Board of Water Supply comes from our customers.

32%

Non-residential customers pay \$4.96 per 1,000 gallons.



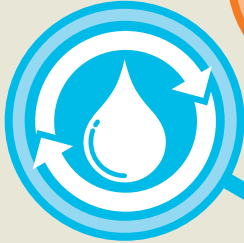
50%

Residential customers pay \$4.42 - \$7.94 per 1,000 gallons.



3%

Customers who use non-potable water pay \$2.47 per 1,000 gallons.



1%

Agricultural customers pay \$1.89 per 1,000 gallons over 13,000 gallons.



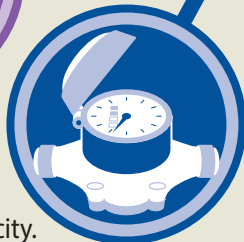
7%

Billing charge \$9.26 per month.



5%

Water system facilities charge one-time charge based on water use capacity.



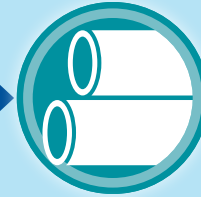
2%

Other



What the revenues pay for:

25%



Capital Projects

24%



Fixed Charges

23%



Operations & Maintenance

19%



Board of Water Supply Employee Salaries

9%



Debt Service

The Fine Print



To encourage conservation, residential water rates increase in two steps to a maximum of \$7.94 per 1,000 gallons. Steps are different for single-family homes and multi-family homes (apartments and condominiums).



All of our non-residential customers—the businesses that drive our island's economy—pay the same rate of \$4.96 per 1,000 gallons.



Non-potable water rates are historically lower than that for potable water. This benefits customers by making more potable water available to everyone. Some non-potable customers—including recycled water customers—have negotiated agreements.



To encourage local farming of fresh, healthy produce, agricultural water rates begin at \$4.42 per 1,000 gallons up to 13,000 gallons. Rates for water use over that amount drop to \$1.89 per 1,000 gallons.



A one-time charge required from all new developments seeking water supplies from BWS or additional supplies from an existing BWS water service, except where the developer installs a water system at its own cost.



Revenue from other sources including interest income, rental income, and miscellaneous charges.